

**1000
GRASSROOTS
TEAMS PARTICIPATING!**

THIS IS YOUR YEAR

EST 2022

THE UK'S BIGGEST YOUTH FOOTBALL FESTIVAL



ESF2022
THE UK'S BIGGEST YOUTH FOOTBALL FESTIVAL



THE ULTIMATE TOURING EXPERIENCE

CONTENTS

ABOUT ESF	4
ESF 2022 CALENDAR	7
CELEBRITY PRESENTATIONS	8
ESF GRAND FINALE	10
GIRLS FOOTBALL AT ESF	12
BUTLIN'S BOGNOR REGIS	14
BUTLIN'S MINEHEAD	16
BUTLIN'S SKEGNESS	18
HAVEN AYR	20
2019 ROLL OF HONOUR	22
TESTIMONIALS	24
HOW TO BOOK, INFO, T&C'S	26
TEAM REGISTRATION FORM	29

AWARD WINNING TOURS



SILVER
Best Business Serving Sport
less than 20 employees



BRONZE
Best Business Serving Football
up to £2m turnover

NSPCC

**2018 CHILDHOOD
CHAMPIONS AWARDS**
Corporate Partner of the
Year - Midlands

MAKING MEMORIES



Casey Stoney, Sue Smith & Robert Pires



Butlin's Bognor Regis



St George's Park

ESF2022

THE UK'S BIGGEST YOUTH FOOTBALL FESTIVAL

With 1000 teams and 35,000 people participating, ESF is the biggest youth football festival in the UK - there's nowhere better to take your team on tour. Let's go all in for 2022 and give your players, coaches and supporters something to really look forward to!

CELEBRITY PRESENTATIONS

Our spectacular presentations are always a tour highlight. Celebrity guests have included John Barnes, Kevin Keegan, Wayne Bridge, Stuart Pearce, Jordan Nobbs, Faye White, Robbie Fowler, Ian Wright, Danny Murphy and more.

Butlin's

Haven

THE BEST HOLIDAY RESORTS

ESF is staged exclusively at Butlin's award winning Resorts in Bognor Regis, Minehead and Skegness, and Haven's Holiday Park in Ayr, Scotland. Whatever the result on the pitch, your team are sure to have a fantastic time away together on tour.

*** ESF ***
GRAND
FINALE

St
GEORGE'S
PARK

ESF GRAND FINALE

Win your age section at ESF 2022 at Butlin's and your team will qualify for the prestigious ESF Grand Finale, our Champion of Champions event. The ESF Grand Finale is staged at St George's Park, the home of England's national teams.



ESF APP

The ESF App is packed with great features. Fixtures, schedules and festival info go live 7-10 days before each festival. Search 'ESF Football' in your App store to download.



BOOK WITH CONFIDENCE

Since our very first ESF festival in 1989, over 1.25 Million people from 35,000 teams have joined us on tour for ultimate weekend of Football & Fun!

ESF is a series of professionally organised football festivals that bring over 1000 grassroots teams together for a fantastic touring experience, with teams accommodated at Butlin's and Haven resorts. ESF 2022 then culminates with the ESF Grand Finale, our Champion of Champions event, which is staged at the home of England's National teams, St George's Park!

Let's go all in for 2022 and give your players, coaches and families something to really look forward to!

PROFESSIONAL ORGANISATION ESF have a passion for football and 33 years experience organising the most prestigious youth football events in the UK.	CORONAVIRUS GUARANTEE If a Butlin's or Haven resort is unable to open for a scheduled ESF festival due to coronavirus, accommodation payments and registration fees will be refunded in full.
NATIONAL FA SANCTION All ESF festivals are sanctioned by the relevant National Football Association.	CHILD PROTECTION All ESF staff are DBS checked. ESF are proud to support the NSPCC.
FIRST AID COVER First Aid cover is provided by professional suppliers at all ESF festivals.	FINANCIAL PROTECTION All payments made to ESF Events are fully protected by ABTOT.
ESF CORE VALUES The following Core Values are at the forefront of everything we endeavour to achieve at ESF: TEAMWORK SPORTSMANSHIP ENJOYMENT FRIENDSHIP RESPECT	



EST2022 CALENDAR

Haven **AYR, SCOTLAND**

8-11 APRIL

U8 - U13 TEAMS

Butlin's **MINEHEAD, SOMERSET**

22-25 APRIL

U7 - U14 TEAMS | U10 - U14 GIRLS TEAMS

Butlin's **SKEGNESS, LINCOLNSHIRE**

22-25 APRIL

U7 - U14 TEAMS | U9 - U15 GIRLS TEAMS

Butlin's **BOGNOR REGIS, WEST SUSSEX**

29 APRIL-2 MAY

U7 - U14 TEAMS

Butlin's **SKEGNESS, LINCOLNSHIRE**

29 APRIL-2 MAY

U7 - U14 TEAMS

Haven **AYR, SCOTLAND**

29 APRIL-2 MAY

U8 - U13 TEAMS

Butlin's **BOGNOR REGIS, WEST SUSSEX**

13-16 MAY

U7 - U14 TEAMS | U9 - U15 GIRLS TEAMS
| U13 INCLUSIVE (PAN DISABILITY)

ST GEORGE'S PARK STAFFORDSHIRE

18-19 JUNE

U7 - U14 TEAMS | U9 - U15 GIRLS TEAMS

TYPICAL TOUR ITINERARY

Friday	- Arrival & Check In at Butlin's/Haven - Team Registration & Coaches Welcome Meeting at 8PM - Full evening Entertainment Programme
Saturday	- Day 1 of Festival - Group Stage matches - Tour activities - Water Park, Climbing Wall, Go Karts etc. - Full evening Entertainment Programme
Sunday	- Day 2 of Festival - Final Group Stage matches & Playoffs where required - Tour activities - Water Park, Climbing Wall, Go Karts etc. - ESF Celebrity Presentation Ceremonies - Departure for guests wishing to depart on Sunday
Monday	- Departure for guests wishing to depart on Monday

MEET A LEGEND

With dramatic sound and lighting effects, our spectacular presentation ceremonies are the highlight of the tour for many teams. It's a proud moment for the parents and coaches, as each team gets their moment of glory on the big stage in front of a packed auditorium, where every player receives a quality trophy from our celebrity guest.

Legends of the game join us at the ESF presentations to meet all the children and hand out the awards. Every player receives a quality trophy as a memento of ESF and there are superb individual trophies for squad members of the winners and runners-up in each age section and a custom made 20" ESF Champions trophy for the winning team. On top of this, the ESF Fair Play Awards and Golden Ball Award are presented in each age group, as well as the prestigious Player of the Tournament Award.

The ESF presentation is the perfect way to close the festival and will be a experience to remember for all players, coaches and parents.



- SIR GEOFF HURST
- IAN WRIGHT
- JOHN BARNES
- MARK NOBLE
- CASEY STONEY
- SCOTT BROWN
- BRYAN ROBSON
- ROBBIE FOWLER
- FAYE WHITE
- PAUL & TOM INCE
- AIDEN MCGEADY
- KEVIN KEEGAN
- BARRY FERGUSON
- MATT LE TISSIER
- DANNY MURPHY
- CHRIS SMALLING
- SUE SMITH
- IAN RUSH
- DIDI HAMANN
- WAYNE BRIDGE
- ROBBIE SAVAGE
- STUART PEARCE
- ROBERT PIRES
- GORDON STRACHAN
- JORDAN NOBBS
- MARTHA HARRIS
- PETER BEARDSLEY
- SIR GEOFF HURST
- IAN WRIGHT
- TEDDY SHERINGHAM
- ALEX MCLEISH
- PAUL MERSON
- RAY PARLOUR
- LEDLEY KING
- KRIS BOYD
- KENNY MILLER

★★★ **EST** ★★★
**GRAND
 FINALE**

**St
 GEORGE'S
 PARK**

ST GEORGE'S PARK, STAFFS

18-19 JUNE

U7 - U14 TEAMS
 U9 - U15 GIRLS TEAMS



CHAMPION OF CHAMPIONS

To be crowned ESF 2022 Champions is a fantastic achievement, but now an even bigger test awaits. Win your age section at ESF 2022 and your team will be invited to attend the prestigious ESF Grand Finale, our Champion of Champions event. Your team will compete against the best teams from ESF 2022 for the ultimate crown – It's a thrilling climax to the ESF Calendar.

We're delighted to announce that the 2022 ESF Grand Finale will return to one of the World's finest training facilities, St George's Park.

The ESF Grand Finale is a free of charge, invitation only event. In accordance with SYFA guidelines, the U8-U12 age sections at ESF 2022 in Ayr are played on a non-competitive, friendly basis, so teams in these age sections cannot qualify for the ESF Grand Finale at St George's Park. Further details on page 26.



THESE GIRLS CAN

Join 200 girls teams from all over the UK on tour at ESF 2022!

At ESF we're fully committed to girls football. Tournaments are available for U9 to U15 girls teams at a selection of our very best ESF 2022 festivals, attracting teams of all abilities from around the UK.

To make ESF extra special for the girls, we invite some of the leading names in women's football to join us at our UK presentations. England International stars Casey Stoney, Jordan Nobbs, Claire Rafferty, Sue Smith, Martha Harris and Faye White have all made special appearances at ESF. This gives the girls the opportunity to meet a role model from the women's game and always proves to be extremely popular with the girls teams who join us on tour.

2022 is set to be our biggest year ever for girls football, with up to 200 girls teams participating. Join us on tour at the UK's biggest youth football festival and make this season one your girls will never forget!

Butlin's

MINEHEAD

22-25
APRIL

U10 - U14 GIRLS 7-A-SIDE

Butlin's

SKEGNESS

22-25
APRIL

U9 - U11 GIRLS 7-A-SIDE
U12 - U15 GIRLS 9-A-SIDE

Butlin's

BOGNOR REGIS

13-16
MAY

U9 - U11 GIRLS 7-A-SIDE
U12 - U15 GIRLS 9-A-SIDE

...ESF...
GRAND
FINALE

ST
GEORGE'S
PARK

STAFFORDSHIRE

18-19
JUNE

U9 - U11 GIRLS 7-A-SIDE
U12 - U15 GIRLS 9-A-SIDE



ESF AMBASSADORS



Watch ESF celebrity interviews and more at
www.footballfestivals.co.uk/esf-videos

We're delighted to have Casey Stoney and Sue Smith as Ambassadors for girls football at ESF 2022.

"I love being an Ambassador for ESF. Teams come together, you get to meet new people, have new experiences as a young person... and you're doing it with your friends, your teammates. The kids have all got smiles on their faces and it's so great to see."

CASEY STONEY

"Going on tour as a player is something that you can't really explain unless you've been on a tour... You make so many good friends, and it's friends for life. It's that teamwork, that camaraderie, that you just can't beat. I'm sure it's something that these girls and boys get every time they come to ESF."

SUE SMITH



OCEAN HOTEL

Butlin's

Quite simply, there's no better place to stage an action packed football tour on the South Coast than Butlin's award winning resort in Bognor Regis.



BOGNOR REGIS, WEST SUSSEX

ESF 2022 at Butlin's Bognor Regis is without doubt the biggest and most prestigious grassroots festival of its kind on the South Coast. We're delighted to be returning to Butlin's award winning resort to stage two huge ESF festivals in 2022. The entire resort at Butlin's is booked to stage the festivals, meaning up to 400 girls and boys teams from all over the UK will be able to join us on tour!

With quality accommodation, fantastic facilities and superb entertainment, Butlin's is the perfect base for an unforgettable football tour.

The tournament is staged at Felpham Community College, the Arena Sports Centre and King George V playing fields, all of which are within 2 miles of Butlin's.

After an exciting day at the pitches, Butlin's resort has a huge variety of sports and leisure facilities, exciting rides at the Traditional Fairground, superb entertainment venues, quality accommodation and great places to eat and drink.

There's an amazing new £40m family pool, which has been designed with seaside inspired features. The new pool includes a helter-skelter water slide, stick of rock and racer slides, flumes, a wave pool and Seaside Garden rapids along with a café and new changing village.

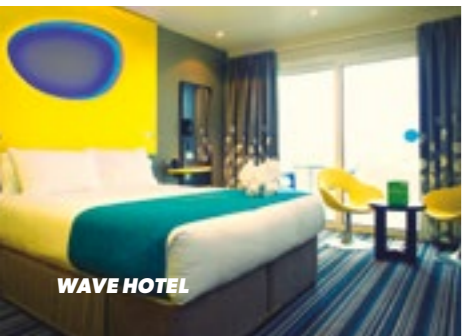
When the evening comes around, there's a variety of live shows, tribute acts, live bands and discos, so your team will enjoy some amazing family entertainment, at no extra cost!

If you're looking for extra thrills, you can pay a small extra charge for activities like the High Ropes course with Climbing Wall and Zip Wire, Go Karts, Adventure Golf and Ten-Pin Bowling.

Butlin's has a great range of quality accommodation on resort. Those who crave a bit of luxury can book into one of Butlin's contemporary hotels – the Shoreline with fantastic sea views, the Wave Hotel, or the Ocean Hotel with its own spa!

There's also a wide selection of places to eat and drink on resort and Butlin's Dining Plans are always a popular choice, where you get breakfast and an evening meal included. There's plenty to choose from and you can go back for seconds as many times as you like, perfect for hungry young footballers! The dining times are scheduled so they don't clash with your fixtures. There's also The Diner, Traditional Fish & Chips Restaurant, Papa John's, The Beachcomber Inn and our new Firehouse Grill all on resort.

Teddy Sheringham, Robert Pires, Wayne Bridge, Ian Wright, Danny Murphy, Stuart Pearce, Casey Stoney, Matt Le Tissier and Sue Smith have all made special guest appearances in recent years at the ESF presentations in Bognor Regis. So, if you're looking for the ultimate touring experience on the South Coast, call ESF and reserve your team place at ESF 2022 in Bognor Regis!



WAVE HOTEL



ESF2022

TOURNAMENT DETAILS

Dates: **Fri 29 Apr - Mon 2 May**
Age Groups: U7 - U8: 5-a-side
U9 - U10: 7-a-side
U11 - U12: 9-a-side
U13 - U14: 11-a-side

Dates: **Fri 13 - Mon 16 May**
Age Groups: U7 - U8: 5-a-side
U9 - U10: 7-a-side
U11 - U12: 9-a-side
U13 - U14: 11-a-side
U9 - U11 Girls: 7-a-side
U12 - U15 Girls: 9-a-side
U13 Inclusive: 5-a-side (Pan Disability)

TEAM REGISTRATION FEES

5-a-side = £119 | 7-a-side = £149

9-a-side = £169 | 11-a-side = £199

or Club Registration Fee
(Unlimited Teams) = £399

U13 Inclusive (Pan Disability) = Free

ACCOMMODATION PRICES (PER PERSON)

	Silver Room	Standard Apartment	Silver Apartment	New Style Silver Apt.	Gold Apartment	Deluxe Suite	Seaside Apartment	Shoreline Hotel Room	Shoreline Stateroom	Ocean Hotel Room	Wave Hotel Room	Wave Hotel Apartment
2 Berth	✓					✓				✓		
3 Berth	✓							✓			✓	
4 Berth	✓	✓	✓	✓	✓		✓	✓	✓	✓	✓	✓
5 Berth	✓		✓		✓		✓			✓		✓
6 Berth	✓		✓		✓		✓					✓
7 Berth			✓									
29 Apr - 2 May	£149	£155	£167	£172	£179	£185	£189	£179	£205	£195	£195	£219
13 - 16 May	£115	£119	£129	£137	£145	£149	£155	£145	£169	£159	£159	£185

FREE PLACES One free place for every 25 paying guests in your party.

DINING PLANS	Infant 0-1yrs	Toddler 2-5yrs	Child 6-14yrs	Adult +15yrs
Food Court	FREE	£15.75	£31.50	£62.25
Premium Restaurants	FREE	£20.85	£41.85	£83.25

IMPORTANT: Accommodation for your whole party, including players, families, managers and supporters, must be booked through ESF Events. If members of your party book alternative accommodation, which is not through ESF Events, the team will not be permitted to participate in the festival. Accommodation prices are per person (€ Inc VAT) for 3 nights accommodation and include ESF Wristbands and Butlin's entertainment passes. Balconies, Patios and Sea Views may be available as an optional extra for an additional charge of £5 per person in some grades of accommodation. Additional grades of accommodation may be available. Half Board Dining Plan prices are per person for the weekend and include evening meal on Friday, breakfast and evening meal on Saturday and Sunday, and breakfast on Monday. The meal times are scheduled so they don't clash with your festivals fixtures. A moderate charge may apply to some facilities at Butlin's. Please refer to T&C's and unoccupied bed information on pages 26 & 27.



Search ESF Festival of Football

T01664 566360 E info@footballfestivals.co.uk W www.footballfestivals.co.uk



Butlin's

Located opposite the beach, yet on the doorstep of the great wilderness of Exmoor National Park, Butlin's Minehead is a jewel in the crown for ESF – it's a superb base for a memorable touring experience.

MINEHEAD, SOMERSET

ESF 2022 at Butlin's Minehead is the biggest touring festival for grassroots teams in the South West and is the perfect choice for an action-packed tour. Over 150 girls and boys teams will join us on tour, for what's set to be a fantastic weekend of football and fun for everyone!

Minehead Town FC play host to the festival, along with venues throughout the town and picturesque surrounding villages, offering a warm welcome to teams of all abilities.

After an exciting day of action at the pitches, the on resort facilities at Butlin's are perfect for teams on tour. The resort has a huge variety of sports and leisure facilities, exciting rides at the Traditional Fairground, superb entertainment venues, quality accommodation and great places to eat and drink.

The amazing Splash Waterworld is packed with flumes, rides and slides, it's always a firm favourite for the kids and adults alike. There's also a variety of live shows, tribute acts, live bands and discos, so your team will enjoy some amazing family entertainment, at no extra cost!

If you're looking for extra thrills, you can pay a small extra charge for activities like the High Ropes, Climbing Wall, Go Karts, the Adventure Golf or Ten-Pin Bowling. Butlin's really is the perfect base for an action-packed tour.

There's a great range of quality accommodation available to suit all budgets. The stylish chalets in the West Lakes Village have proved to be a big hit for teams wanting a spacious, cosy and beautiful place to rest after an exciting day at the pitches.

Butlin's Dining Plans always prove to be extremely popular with our teams on tour. There's a wide selection of choices available and you can go back for seconds as many times as you like – perfect for hungry young footballers! The dining times are scheduled so they don't clash with your festival fixtures. There's also The Diner, Firehouse Grill, Ludo's Italian, The Beachcomber Inn and Traditional Fish & Chips Restaurant all on resort!

Kevin Keegan, Casey Stoney, Stuart Pearce, Danny Murphy, John Barnes, Sue Smith, Matt Le Tissier and Darren Anderton have all appeared at our spectacular celebrity presentations in Minehead in recent years, capping off a memorable weekend for everyone involved. The final presentations will finish by around 7pm (earlier for younger age groups), so guests have the option of traveling home on the Sunday evening or Monday morning.

Demand for ESF 2022 is expected to be greater than ever before. Call us today to reserve your place and make this season one your players and families will never forget!



LAKESIDE CHALET



ESF 2022

TOURNAMENT DETAILS

Dates: **Fri 22 - Mon 25 April**
 Age Groups: U7 - U8: 5-a-side
 U9 - U10: 7-a-side
 U11 - U12: 9-a-side
 U13 - U14: 11-a-side
 U10 - U14 Girls: 7-a-side

TEAM REGISTRATION FEES

5-a-side = £119 | 7-a-side = £149
 9-a-side = £169 | 11-a-side = £199
 or Club Registration Fee (Unlimited Teams) = £399

ACCOMMODATION PRICES (PER PERSON)

	Standard Room	Silver Room	Silver Suite	Standard Apartment	Silver Apartment	Silver Bungalow	Gold Apartment	Deluxe Suite	Seaside Apartment	Parkview Chalet	Lakeview Chalet	Lakeside Chalet
2 Berth	✓	✓						✓				
3 Berth	✓	✓										
4 Berth	✓	✓	✓	✓	✓	✓	✓	✓	✓	✓	✓	✓
5 Berth	✓	✓		✓	✓	✓	✓	✓	✓	✓	✓	✓
6 Berth		✓		✓	✓	✓	✓	✓	✓	✓	✓	✓
7 Berth				✓		✓	✓				✓	✓
8 Berth							✓				✓	✓
22 - 25 April	£99	£109	£115	£115	£125	£129	£139	£145	£149	£159	£165	£169

FREE PLACES One free place for every 25 paying guests in your party.

DINING PLANS	Infant 0-1yrs	Toddler 2-5yrs	Child 6-14yrs	Adult +15yrs
Food Court	FREE	£15.75	£31.50	£62.25
Premium Restaurants	FREE	£20.85	£41.85	£83.25

IMPORTANT: Accommodation for your whole party, including players, families, managers and supporters, must be booked through ESF Events. If members of your party book alternative accommodation, which is not through ESF Events, the team will not be permitted to participate in the festival. Accommodation prices are per person (£ Inc VAT) for 3 nights accommodation and include ESF Wristbands and Butlin's entertainment passes. Balconies, Patios and Sea Views may be available as an optional extra for an additional charge of £5 per person in some grades of accommodation. Additional grades of accommodation may be available. Half Board Dining Plan prices are per person for the weekend and include evening meal on Friday, breakfast and evening meal on Saturday and Sunday, and breakfast on Monday. The meal times are scheduled so they don't clash with your festivals fixtures. A moderate charge may apply to some facilities at Butlin's. Please refer to T&C's and unoccupied bed information on pages 26 & 27.



Butlin's

SKEGNESS, LINCOLNSHIRE

Our Skegness festivals are not only our most popular events, selling out year after year, they're also the biggest tournaments of their kind in the UK, with 400 teams and 15,000 people taking part annually.



We're delighted to be returning to Butlin's Skegness to stage two huge ESF festivals in 2022, both of which are supported by Leicester City Academy Recruitment. 400 girls and boys grassroots teams and 15,000 people from all over the UK are set to join us again, making ESF Skegness the biggest youth football tournaments of their kind in the UK!

It's not hard to see why so many teams are queuing up to join us at ESF in Skegness each year. On top of being one of the most prestigious youth football tournaments in the UK, Butlin's Skegness is without doubt one of the very best holiday resorts around. It's the perfect combination for an action-packed tour.

The festival itself is staged at Butlin's Sports Field, Skegness Town FC, Skegness Academy and Grammar School, Swifts JFC and Wainfleet Road Sports Ground, all of which are within 3 miles of Butlin's.

After the football finishes each day, Butlin's has a huge variety of sports and leisure facilities, exciting rides at the Fairground, superb entertainment venues, quality accommodation and great places to eat and drink.

The amazing Splash Waterworld is packed with flumes, rides and slides, it's always a firm favourite for the kids and adults alike. When the evening comes around there's also a variety of live shows, tribute acts, live bands and discos, so your team will enjoy some amazing family entertainment, at no extra cost!

If you're looking for extra thrills, you can pay a small extra charge for activities like the High Ropes, with the excitement of 'Freefall', Climbing Wall, Go Karts, Quasar, Adventure Golf, Ten-Pin Bowling or catch a box office hit at Butlin's Cinema.

Your party are assured of a comfortable stay in a choice of accommodation including Fairground and Seaside Apartments which are beautifully decorated modern family apartments.

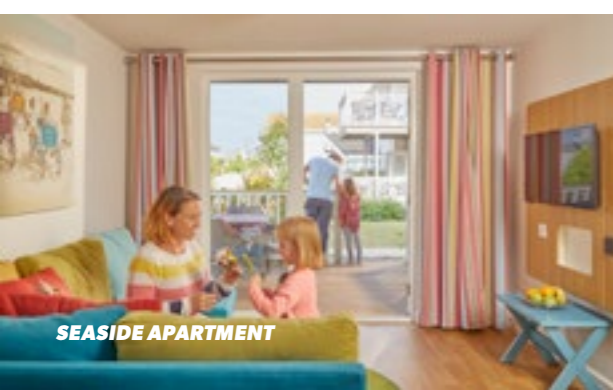
Butlin's Dining Plans always prove to be extremely popular with our teams. There's a wide selection of choices available and you can go back for seconds as many times as you like – perfect for hungry young footballers! The dining times are scheduled so they don't clash with your festivals fixtures. There's also the Firehouse Grill, Ludo's Italian, Rock & Sole fish and chips, The Beachcomber Inn and The Diner all on resort.

Our celebrity presentations at ESF Skegness are a sight to behold. Kevin Keegan, Paul Merson, Faye White, Ray Parlour, Danny Murphy, Jordan Nobbs, Ledley King, Ian Rush, Stuart Pearce and Casey Stoney have all made special guest appearances at ESF Skegness in recent years, it really is a fantastic way to close the festival.

PLEASE NOTE: ESF at Butlin's Skegness is one of our most popular venues. Early registration is recommended. Call ESF on 01664 566360 to reserve your team place.



GOLD APARTMENT



SEASIDE APARTMENT



ESF2022

TOURNAMENT DETAILS

Dates: **Fri 22 - Mon 25 April**

Age Groups: U7 - U8: 5-a-side
U9 - U10: 7-a-side
U11 - U12: 9-a-side
U13 - U14: 11-a-side

U9 - U11 Girls: 7-a-side
U12 - U15 Girls: 9-a-side

Dates: **Fri 29 April - Mon 2 May**
(Bank Holiday Weekend)

Age Groups: U7 - U8: 5-a-side
U9 - U10: 7-a-side
U11 - U12: 9-a-side
U13 - U14: 11-a-side

TEAM REGISTRATION FEES

5-a-side = £119 | 7-a-side = £149
9-a-side = £169 | 11-a-side = £199
or Club Registration Fee
(Unlimited Teams) = £399

Supported by



ACCOMMODATION PRICES (PER PERSON)

	Standard Room	Silver Room	Standard Apartment	Silver Apartment	New Style Silver Apt.	Gold Apartment	Fairground Apartment	Seaside Apartment
2 Berth	✓	✓						
3 Berth		✓						
4 Berth	✓	✓	✓		✓	✓	✓	✓
5 Berth		✓		✓	✓	✓		
6 Berth		✓		✓	✓	✓		
7 Berth		✓						
22 - 25 April	£99	£109	£115	£125	£129	£135	£135	£139
29 April - 2 May	£129	£139	£145	£155	£159	£165	£165	£169

FREE PLACES One free place for every 25 paying guests in your party.

DINING PLANS	Infant 0-1yrs	Toddler 2-5yrs	Child 6-14yrs	Adult +15yrs
Food Court	FREE	£15.75	£31.50	£62.25
Premium Restaurants	FREE	£20.85	£41.85	£83.25

IMPORTANT: Accommodation for your whole party, including players, families, managers and supporters, must be booked through ESF Events. If members of your party book alternative accommodation, which is not through ESF Events, the team will not be permitted to participate in the festival. Accommodation prices are per person (£ Inc VAT) for 3 nights accommodation and include ESF Wristbands and Butlin's entertainment passes. Balconies, Patios and Sea Views may be available as an optional extra for an additional charge of £5 per person in some grades of accommodation. Additional grades of accommodation may be available. Half Board Dining Plan prices are per person for the weekend and include evening meal on Friday, breakfast and evening meal on Saturday and Sunday, and breakfast on Monday. The meal times are scheduled so they don't clash with your festivals fixtures. A moderate charge may apply to some facilities at Butlin's. Please refer to T&C's and unoccupied bed information on pages 26 & 27.



CRAIG TARA, AYR, SCOTLAND

2022 will be the 32nd year of the ESF Festival of Football in Ayr! Join 150 grassroots teams from all over the UK for the ultimate touring experience at Scotland's very best youth football festival!



With 150 teams from all over Scotland, Northern Ireland, Eire and England participating, ESF in Ayr is the biggest youth football festival of its kind in Scotland! The Old Racecourse sports ground in Ayr is transformed into a quality 14 pitch venue to stage the festival. Located just 2 miles from Haven's Craig Tara, it really is a fantastic base for the tournament.

All teams are accommodated at Haven's award winning Craig Tara holiday park for the duration of the festival, which is set on the beautiful West Coast of Scotland. As well as being located right next to the beach and boasting spectacular views across to the Isle of Arran, Craig Tara has a huge range of sports and leisure facilities, great evening entertainment venues and quality accommodation.

After an exciting day of action at the pitches, there's a fantastic range of facilities for everyone to enjoy back at Haven. There's a great indoor pool complex with flumes and slides, an all-weather multi-sports court, adventure playground areas, 9-hole golf course, indoor sports zone, go karts, climbing wall and much more.

In the evenings, the family entertainment venues give everyone the opportunity to relax with a drink whilst enjoying a full entertainment programme. Live bands, shows, cabarets and discos will ensure both kids and parents are entertained throughout your stay.

There's a great selection of places to eat and drink at Craig Tara, with Papa John's Pizza, the Brigs of Ayr: Lounge-Bar-Café, Burger King and Fish & Chips all on the Park.

A wide range of accommodation is available at Craig Tara. With prices from £109 per person for 3 nights, plus other ways to save money with free places and Cashback offers, our tournaments in Ayr offer great value for money for teams looking for an action packed tour.

Our celebrity presentations are attended by superstars of the Scottish Premiership and legends of the game. We've been delighted to welcome Scotland managers Alex McLeish and Gordon Strachan to the ESF Festivals in Ayr in recent years. Scott Brown, Kenny Miller, Aiden McGeady, Kris Boyd, Barry Ferguson, John Hartson, and John Barnes have also made special appearances, giving many young players the chance to meet their heroes.

If you're looking for a great end of season tour in Scotland, then look no further. Join us and make 2022 a year your players and families will never forget. ESF in Ayr is always one of our most popular venues, so early registration is recommended. Call ESF Events on 01664 566360 to reserve your team place!



ESF2022

TOURNAMENT DETAILS

Dates: **Fri 8 - Mon 11 April**

Age Groups: U8: 5-a-side
U9 - U11: 7-a-side
U12: 9-a-side
U13: 11-a-side

Dates: **Fri 29 April - Mon 2 May**
(Bank Holiday Weekend)

Age Groups: U8: 5-a-side
U9 - U11: 7-a-side
U12: 9-a-side
U13: 11-a-side

TEAM REGISTRATION FEES

5-a-side = £119 | 7-a-side = £149

9-a-side = £169 | 11-a-side = £199

or Club Registration Fee
(Unlimited Teams) = £399

PLEASE NOTE: In accordance with SYFA rules, the U8-U12 age sections at ESF 2022 in Ayr will be played on a friendly, round robin basis, and results will not be recorded. All players will receive a quality participation trophy from a football celebrity to celebrate the achievements of all the children. Due to this ruling, U8-U12 teams attending the ESF 2022 festivals in Ayr cannot qualify for the ESF Grand Finale.

ACCOMMODATION PRICES (PER PERSON)

	Standard Apartment	Comfort Apartment	Standard Caravan	Deluxe Caravan	Prestige Caravan	Prestige Caravan with deck	Platinum Caravan
4 Berth	✓	✓	✓	✓	✓	✓	✓
5 Berth	✓	✓	✓	✓	✓	✓	✓
6 Berth	✓	✓	✓	✓	✓	✓	✓
7 Berth		✓		✓	✓	✓	
8 Berth		✓		✓	✓	✓	
8 - 11 April	£115	£119	£119	£129	£145	£155	£165
29 April - 2 May	£119	£125	£125	£135	£149	£159	£169

FREE PLACES One free place for every 25 paying guests in your party.

CASHBACK	Put 7 or 8 people in a caravan and get Cashback from ESF Events.	People in unit	7	8
		Cashback	£50	£100

IMPORTANT: Accommodation for your whole party, including players, families, managers and supporters, must be booked through ESF Events. If members of your party book alternative accommodation, which is not through ESF Events, the team will not be permitted to participate in the festival. Accommodation prices are per person (£ Inc VAT) for 3 nights accommodation and include ESF Wristbands and Haven's entertainment passes. Additional grades of accommodation may be available. A moderate charge may apply to some facilities at Haven. Please refer to T&C's and unoccupied bed information on pages 26 & 27.

EST 2019 ROLL OF HONOUR

ESF GRAND FINALE	ST GEORGES PARK 6 - 7 JULY	AGE	WINNERS	RUNNERS-UP
		U7	Marine Academy Plymouth 'A'	Baldon Sports
		U8	Global Football Academy Santos	Lambeth Tigers
		U9	Marine Academy Plymouth 'J'	LSS Academy Reds
		U10 Girls	Fareham Town	Newcastle East End Reds
		U10	Humbledon & Plains Farm Blues	Evesham United
		U11 Girls	Newcastle East End Reds	Watford Girls
		U11	Whitehaven Amateurs Hornets	Billericay Town Colts / Welling United
		U12 Girls	Boldon CA Girls	Colebrook Royals
		U12	Wortley FC Juniors	Carshalton Athletic / George Spencer Academy / Lambeth Tigers
		U13 Girls	HFR Haringey Girls Academy	Newcastle East End Reds
		U13	Red House Farm AFC	Cadbury Athletic
		U14 Girls	Preston North End	Cambridge City Girls
		U14	Marine Academy Plymouth	Staines Town Juniors
		U15 Girls	Stevenage Borough Girls	Derby County Ladies
U15	Shifnal Town Harriers	Barrow Town		

ESF AYR	12-15 APRIL	AGE	WINNERS	RUNNERS-UP	FAIR PLAY AWARD	PLAYER OF THE TOURNAMENT Shea McCann Cookstown Youth U14
		U8	-	-	Braehead FC Red	
		U9	-	-	Bloomfield FC Jets	
		U10	-	-	Bloomfield FC	
		U11	-	-	Fairmuir Boys Tangerine	
		U12	-	-	Calderglen Thistle Navy	
		U13	East End United	Cookstown Youth FC	Phoenix Athletic FC	
	U14	Braehead FC	Crosshouse CFC	Broughty United Pumas		
	3-6 MAY	AGE	WINNERS	RUNNERS-UP	FAIR PLAY AWARD	PLAYER OF THE TOURNAMENT Kerr McCrone Dalrymple Colts U13
		U8	-	-	Great Park Juniors Whites	
		U9	-	-	Loughgall Youth FC	
		U10	-	-	Cambuslang FC	
		U11	-	-	Blantyre Soccer Academy Gold 2	
		U12	-	-	Salvesen BC	
U13		Newcastle Benfield San Siro	Gleniffer Thistle FC	Newcastle Benfield San Siro		
U14	Ashington CFC	Shankill United	Great Park Juniors			

ESF MINEHEAD	26 - 29 APRIL	2024 FAIR PLAY AWARD			
		AGE	WINNERS	RUNNERS-UP	FAIR PLAY AWARD
		U7	Marine Academy Plymouth 'A'	Hucclecote Hawks	Tondu United FC Whites
		U8	AFC Gornal East	Drake FC	RTB Ebbw Vale FC
		U9	Marine Academy Plymouth 'J'	Top Score FC	Nailsea United
		U10 Girls	Illogan JFC Dragons	Plymouth Phoenix Girls FC	Tredegar Women & Girls AFC
		U10	AFC Devonport	Nailsea United Blue	Banwell United Reds
		U11 Girls	Weston Mendip FC Girls 'B'	Bognor Regis Town Girls	Tredegar Women & Girls AFC
		U11	Alvechurch FC	Stones Athletic	Llantrisant AFC
		U12 Girls	Plymouth Aspire FC	Marine Academy Plymouth	Plymouth Phoenix Girls FC
		U12	Mousehole AFC 'A'	Marine Academy Plymouth	Bridgwater Victoria Park Rangers
		U13 Girls	Kingshurst Sporting Girls	Newport Civil Service Girls	Bognor Regis Town Girls Greens
		U13	St Josephs Colts	Ellwood Youth FC	Marine Academy Plymouth 'K'
		U14 Girls	Plymouth Phoenix Girls FC	AFC Porth BGC	Wokingham & Embrook FC
U14	Marine Academy Plymouth	Worthing FC	Redruth United Youth		
		PLAYER OF THE TOURNAMENT			
		James Sudds – Worthing Town U14 Sienna Keast— Illogan Dragons U10G			

ESF SKEGNESS	26 - 29 APRIL	AGE	WINNERS	RUNNERS-UP	FAIR PLAY AWARD	PLAYER OF THE TOURNAMENT Brodie Hallworth – Stafford Atletico U9 Millie Crellin – Workington Reds Diamonds U14/G
		U7	Thunder FC Impact	Somersall Rangers Thunder	Tibshelf Tigers	
		U8	Newcastle East End JFC Blues	Boldmere St Michaels Mikes	Winsford Colts Blue	
		U9 Girls	Asfordby Amateurs LGIFC	Newcastle Benfield Juniors	Boldon CA Girls	
		U9	Stafford Atletico	Elite Atletico	Astley & Tyldesley	
		U10 Girls	Newcastle East End JFC Reds	Asfordby Amateurs LGIFC	Mansfield Town Ladies	
		U10	Humbledon & Plains Farm Youth Blues	Hednesford Town Newlands FC	Blaydon Youth Community	
		U11 Girls	Newcastle East End JFC Reds	Newcastle Benfield Juniors	Oadby & Wigston Girls	
		U11	Droylsden Juniors	Histon Hornets	Bedlington United Sporting Club	
		U12 Girls	Boldon CA Girls	Mansfield Town Ladies	ICA Sports	
		U12	George Spencer Academy	Gretton FC	Crosspool Juniors	
		U13 Girls	Newcastle East End JFC Reds	Blyth Town	Babington Academy	
		U13	Peterborough Sports	OBI United	Fulbourn Institute FC	
		U14 Girls	Preston North End	Cambridge City Girls	Mowbray Rangers FC	
	3-6 May	AGE	WINNERS	RUNNERS-UP	FAIR PLAY AWARD	PLAYER OF THE TOURNAMENT Zac Reeves Silcox Villa FC U11
		U7	Garforth Rangers AFC	Discoveries FC Salters	Burradon Juniors AFC Yellows	
		U8	FC Burbage	Mowbray Rangers FC	Bishop Auckland St Marys Kings	
		U9	Easington Colliery	Braintree Town Youth	Hull United Whites	
		U10	Peterborough Northern Star	Trimdon United	Ibstock United Youth Jaguars	
		U11	Whitehaven Amateurs Hornets	Silcox Villa FC	Discoveries Sporting	
		U12	Wortley FC Juniors	Aylestone Park FC	Melton Foxes JFC	
		U13	Red House Farm AFC	Ware FC	Holwell Sports FC	
		U14	Murton FC	Ryton & Crawcrook Albion FC	Poulton FC	

ESF BOGNOR REGIS

3-6 MAY

17-20 MAY

AGE	WINNERS	RUNNERS-UP	FAIR PLAY AWARD
U7	Baldon Sports	Collier Row Youth Red	Interpath Falcons
U8	Global Football Academy Santos	West Brom All Blacks	Wendover Juniors Reds
U9	LSS Academy Red	Hednesford Town Newlands	Ambleside JFC Avengers
U10 Girls	AFC Leyton Girls	Hitchin Belles	Crusaders FC
U10	Evesham United	Ards Rangers Juniors	Protec FC
U11 Girls	Bognor Regis Town	Hitchin Belles FC	AFC Portchester Girls
U11	Billericay Town Colts	Long Lane JFC	Teviot Rangers
U12 Girls	Hitchin Belles FC	Colebrook Royals	Hitchin Belles FC
U12	Carshalton Athletic	Halfway Juniors	Caldecote Youth
U13 Girls	HFR Haringey Girls Academy	Droylsden Juniors	Tilehurst Panthers Belles
U13	Cadbury Athletic	Isleworthians Youth FC	Chesworth Rovers
U14 Girls	Billericay Town Girls FC	Alvechurch Academy	Crawley United
U14	Carshalton Athletic	Worthing FC	Dunton & Broughton United
U15 Girls	AFC Portchester Girls	Eastleigh FC	Oakwood Youth FC

AGE	WINNERS	RUNNERS-UP	FAIR PLAY AWARD
U7	Global FA Santos	Medway United	SC Pass & Move FC
U8	Lambeth Tigers	Hednesford Town Newlands FC	SC Pass & Move FC
U9	Global FA Santos	Top Score Chaos FC	Collier Row FC Red
U10 Girls	AFC Portchester Girls Royals	Hutton FC Girls	AFC Portchester Girls Castles
U10	Bracknell Town	Cookham Dean FC	18th Newtownabbey Youth
U11 Girls	Watford Girls	Medway United	Chadderton Park FC
U11	Welling United	Sutton United	FC Sunbury
U12 Girls	The Charter School East Dulwich	Beacon Hill Girls Aloud Diamonds	Mindset FC
U12	Lambeth Tigers	The Charter School	SC Pass & Move FC
U13 Girls	Eastleigh Blues Girls	Colne Valley Girls	The Charter School
U13 Inclusive	Hamble Club Youth Yellows	AFC Bournemouth Ability Counts 'A'	AFC Bournemouth Ability Counts 'B'
U13	Bristol Spartak FC	Ballymoney United YA	Merley Cobham Sports Youth
U14 Girls	Cambridge City Girls	Parkwood Rangers	Petts Wood Wrens
U14	Staines Town Juniors	Horndean Youth	Bracknell Cavaliers
U15 Girls	Stevenage Borough Girls	Tottenham Hotspur Ladies	Chichester City Girls
U15	Dynamo Madrid	Shifnal Town Harriers	Hvthe Town Youth FC

PLAYER OF THE TOURNAMENT

Shae McSwiggan – Evesham United U10

Daisy Morris – Hitchin Belles U12G

PLAYER OF THE TOURNAMENT

Harvey McLean – Ballymoney United YA U13

Evie Whymark – Hutton Girls U10

TESTIMONIALS

Sam Hughes ▶ ESF Festival of Football
Jul 8



A brilliant day at the @ESF_Football Grand Finale and another great experience for the boys... @mapfootball



38

Colebrook Royals U13s Girls (19/20) ▶ ESF Festival of Football
Jul 7



Thank you @ESF_Football we had a brilliant day @StGeorgesPark
👍 Runners up 🏆👍



29

Racheal Nevin ▶ ESF Festival of Football
May 22



Proud Mumma x #ESF2019



14

Hamble Club Youth PAN DISABILITY
May 21



What a weekend at the @ESF_Football inclusive football festival at Butlins Bognor Regis. Only to be presented our trophies by these 3 amazing people @suesmith8 @CaseyStoney and this legend @piresrobert7 Thank You 🏆🏆🏆👍



12

PLAYR ▶ ESF Festival of Football
Apr 15



Congratulations to Shea McCann of Cookstown Youth U14's who won the first ever 'PLAYR of the Tournament Award'! Presented by special guest, Kyle Lafferty (Rangers & Northern Ireland striker). Welcome to Team PLAYR, Shea!



16

Zoe ▶ ESF Festival of Football
May 7



So proud, U10s @HitchinBelles were runners up at the @ESF_Football festival. They all played so well with some truly magical moments, not to mention the memories they have created spending 3 nights together. Loved meeting @suesmith8 @CaseyStoney & Stuart Pearce too 🏆🏆🏆👍



27

KHFC ▶ ESF Festival of Football
May 21



What a great weekend for the U12 KHFC team and parents, some great football and some great fun!! @ESF_Football @Butlins



24

Stuart Urpens ▶ ESF Festival of Football
May 19



Unlucky @suttonunited U11's beaten 5-4 on pens in the final after a 2-2 draw against Welling United! Not to be this year but a fantastic tournament keep your heads up boys you've been brilliant and made a lot of friends!! Brilliant time thank you @ESF_Football 🏆🏆🏆👍 #ESF2019



39

Llanyrafon AFC Girls U14s
May 18



Brilliant first day at #ESF2019 @ESF_Football Best mates. Best day. They can't wait to watch the #UWCLfinal later with @JessFishlock @LucyBronze @toniduggan @UWCL @ThisGirlCanUK



27

Hutton FC Girls Wasps ▶ ESF Festival of Football
May 18



Fabulous day with @ESF_Football, here the girl's are with their new friends from Bognor Regis Whites



38

FC Burbage Juniors ▶ ESF Festival of Football
May 7



Thank you to @ESF_Football and @Butlins for an extremely well organised Football experience! A big thank you also to all the fabulous coaches and teams we met and played. What magical memories for these little superstars. We now look forward to playing at @StGeorgesPark



15

Whitehaven AFC ▶ ESF Festival of Football
Jul 6



A superb achievement today from our U11s boys, winning the @ESF_Football Grand Finale at St George's park, ending the day undefeated with two tight draws with Alvechurch FC & Billericay Town & wins against Welling United and AFC Droylsden! Well done!! 🏆🏆🏆👍 @NikePartner



47

Jody Price ▶ ESF Festival of Football
May 19



This girl has had an amazing weekend making memories with some of her favourite people, whilst doing what she loves! 🏆
#girlsfootball #thisgirlcan #footballtour
#footballtournament #butlins #ESF2019 #memories



14

Ben Morgan ▶ ESF Festival of Football
May 18



This is what it's all about! The kids are really enjoying it 🏆🏆🏆 @fc_hutton and @brfcacademy showing great sportsmanship with the two captains exchanging keepsakes before the game 🏆🏆🏆 @ESF_Football



25

Forest Glade Lions U9 2018/19
May 7



What a brilliant event @ESF_Football Bognor. Our families had an amazing time together. Football was superb and have nothing but great things to say about @Butlins #welovedeverysecond @ForestGladeFC @EssexCountyFA @echoleague



18

Sue Smith ▶ ESF Festival of Football
May 6



Great day @ESF_Football in @Butlins yesterday with these two lovely people @CaseyStoney lots of talented footballers on show! What an excellent tournament! 🏆🏆🏆👍



104

SEE MORE REVIEWS ON FACEBOOK AND TWITTER



Search ESF Festival of Football

HOW TO BOOK, TOURNAMENT DETAILS AND T&C'S

HOW TO BOOK

1. Make a Provisional Booking - Call ESF Events and, subject to availability, we will reserve your club a place for up to 2 weeks free of charge.

2. Register Your Team/Club - Complete and return the Team Registration Form (page 29) with the appropriate Team/Club Registration Fee, or call ESF Events on 01664 566360 to register your team over the phone. You will then be emailed a Confirmation of Booking. Please note, Team/Club Registration Fees are non-refundable for teams who cancel their booking.

3. Book Accommodation - Once the club is registered, for teams attending festivals at Butlin's, ESF Events will email the Group Leader a unique accommodation booking link for your team. Group Leaders can simply forward this email to the parents in your group, who can then book accommodation for their family/friends on the ESF Events section of the Butlin's website, through the accommodation booking link. For teams attending the Ayr festivals, the Group Leader will be emailed an accommodation booking form to book units for your whole party. Your party will be given an Accommodation Booking Deadline by ESF Events, which is normally 3 weeks after your Team/Club Registration has been accepted. A deposit of £20 per person is required to book accommodation. The final balance for accommodation will be due no later than 8 weeks before the festival takes place.

IMPORTANT: Accommodation for your whole party, including players, families, coaches and supporters, must be booked through ESF Events. If members of your party book alternative accommodation, which is not through ESF Events, the team will not be permitted to participate in ESF 2022.

FESTIVAL ITINERARY

Friday: No football is played on the day of arrival, so teams can relax and get settled into their accommodation (check in from 4pm) and enjoy the evening's entertainment. A briefing meeting for Group Leaders & Coaches will take place on Friday evening at 8pm.

Saturday & Sunday: There's an electric atmosphere around the pitches as the action starts and ESF kicks off. All teams will play group stage matches on both days. Where required, playoff matches will take place following the group stages. The celebrity presentation will take place on the Sunday evening.

Monday: No football is played on the Monday. Teams therefore have the option of travelling home on the Sunday evening or Monday. Check Out is 10am on Monday but you do not have to leave the resort until Midday, so there's time for a final trip to the Swimming Pool or the Fairground.

FESTIVAL RULES, FIXTURES & FINAL BRIEFING

A full final briefing email will be sent to the Group Leaders of all participating teams 7-10 days before the festival takes place. The final briefing will include fixtures, schedules and the festival rules, which have been sanctioned by the appropriate National Football Association. At this stage, the ESF App will also go live displaying all festival fixtures.

QUALIFICATION/ELIGIBILITY FOR ESF

All teams attending ESF must be affiliated to a County, Area or School Football Association. Club teams must also be registered with an affiliated league for the current season. Centre of Excellence and Academy teams affiliated to professional clubs and 'representative' sides are not permitted to enter ESF 2022. Please contact ESF Events before registering if you have any questions regarding the eligibility of your team(s). In accordance with FA rules, boys who are currently registered with an FA Premier League or Football League Academy, and girls who are registered with a Regional Talent Club, are not permitted to participate in ESF 2022.

TEAM/CLUB REGISTRATION FEES

5-a-side = £99 per team (inc. VAT)
7-a-side = £139 per team (inc. VAT)
9-a-side = £159 per team (inc. VAT)
11-a-side = £189 per team (inc. VAT)

Or Club Registration fee (unlimited teams) = £399 (inc. VAT)

Team/Club Registration fees are non-refundable should you cancel your booking.

NSPCC

We're proud to support the NSPCC at ESF 2022. £5 will be donated to NSPCC (Registered Charity Numbers 216401 and SC037717) for each team that registers to participate in ESF 2022. To date, over £35,000 has been donated to the NSPCC through this scheme.

PLAYER REGISTRATION

All teams are required to complete an ESF Player Registration form, which includes the full name and date of birth of each player to be registered for the festival These forms will be verified by your club officials, to confirm that all details are correct. The ESF committee will retain a copy of this form in the event that it should be necessary to follow up a query about a player's age. Teams are also required to bring either league registration documents or appropriate identification (copy of passport or birth certificate) for all players to the festival, as proof of age.

AGE QUALIFICATION DATES

ENGLISH VENUES

At venues under the jurisdiction of the English FA, the following age qualifications apply. Boys and girls are permitted to play together in all age groups.

AGE GROUP	BORN ON OR AFTER	BORN BEFORE
U15	1 Sep '06	1 Sep '08
U14	1 Sep '07	1 Sep '09
U13	1 Sep '08	1 Sep '10
U12	1 Sep '09	1 Sep '11
U11	1 Sep '10	1 Sep '12
U10	1 Sep '11	1 Sep '13
U9	1 Sep '12	1 Sep '14
U8	1 Sep '13	1 Sep '15
U7	1 Sep '14	1 Sep '15*

*In accordance with FA rules, once a player has turned 6 years of age they will be permitted to participate in the U7 age section at ESF 2022.

SCOTTISH VENUE

At the ESF 2022 festivals in Ayr, the following age qualifications apply in accordance with SYFA rules and regulations. Boys and girls are permitted to play together in all age groups.

AGE GROUP	BORN ON OR AFTER
U13	1 Jan '09
U12	1 Jan '10
U11	1 Jan '11
U10	1 Jan '12
U9	1 Jan '13
U8	1 Jan '14

SPECIAL DISPENSATION: At the ESF festivals in Ayr, where National Associations employ different age group qualification dates (i.e. 1st September as per the English FA), their domestic age group will be accepted. Therefore an English U12 team would play in the U12 section at the ESF festivals in Ayr.

MAXIMUM SQUAD SIZES

In 5-a-side age sections, a maximum of 5 substitutes can be listed in a playing squad. In 7-a-side, 9-a-side and 11-a-side age sections, a maximum of 7 substitutes can be listed in a playing squad.

GUEST PLAYERS

Teams are permitted to register a maximum of two 'guest players' for the festival. 'Guest players' are players who are not currently registered with your club. They must produce documentary evidence to your club secretary to prove that they are the correct age and they must bring these documents with them to the festival.

PITCH LOCATIONS & TRANSPORT

The festival fixtures are played at venues within a close proximity of the holiday centres. Teams are responsible for organising their own transport to and from the pitches whilst at the festival. At the Ayr festival, there is an ESF bus service between the Holiday Park and the football pitches for which weekend passes are available to purchase for £5 per person.

TROPHIES & AWARDS

All players will receive a quality trophy as a memento of ESF 2022. There are also individual awards for the full squad of the winners and runners-up, and a Champions trophy for the winning team in each age group. The ESF Fair Play Awards and Golden Ball Award are presented in each age group, alongside the prestigious PLAYR of the tournament award.

PLEASE NOTE: In accordance with the Scottish Youth Football Association rules, all age sections at the ESF 2022 festivals in Ayr will be played on a friendly, round robin basis, and results will not be recorded. All players will receive a quality participation trophy from a football celebrity to celebrate the achievements of all the children. Due to this ruling, teams attending the ESF 2022 festivals in Ayr cannot qualify for the ESF Grand Finale.

ESF GRAND FINALE

The ESF Grand Finale is an invitation only event which is free of charge to participating teams. A £200 deposit is required from all teams to confirm their attendance. This deposit payment will be refunded to all teams who attend the Finale, but is non-refundable to teams who, after confirming their attendance, do not attend. Due to the limited spectator areas and facilities at St George's Park, a maximum of 2 additional guests (adults or children) will be permitted to attend the ESF Grand Finale with each participating child. The festival is played on 3G pitches at St George's Park.

WATCH OUT-SCOUTS ABOUT

Scouts from some of the biggest clubs in the UK have been spotted at ESF. These include Arsenal, Manchester Utd, Chelsea, Liverpool, Celtic, Newcastle, Leicester City, Spurs, Everton, Manchester City and many more.

EXCHANGE OF PENNANTS

Although not compulsory, it is customary for teams to exchange a pennant or small memento before each game, in keeping with the spirit of the festival.

CHILD PROTECTION & SAFEGUARDING

ESF Events support the Football Association's Child Protection & Safeguarding policies and acknowledge our responsibility to safeguard the welfare of every child and young person attending the festival. ESF Events are committed to working to provide a safe environment for all children. For a copy of the 'Child Protection and Practice Handbook' call the FA/NSPCC Child Protection Hotline on 0808 800 5000. All ESF tournament organisers are DBS checked. The ESF Safeguarding & Welfare Policy can be viewed on the ESF App.

REFEREES

Independent, qualified referees are appointed for all festival matches. They are paid match fees by ESF Events and are accommodated free of charge, with meals provided on a half board basis.

LOCAL TEAMS

Teams from the local area where the festivals are staged are permitted to apply for entry by returning the Team Registration Form. However, we cannot guarantee a place in the festival until the numbers of touring teams are finalised in each age group. At this stage, if additional teams are required in a given age group for the good of the festival, applications from local teams will be accepted on a first-come first-served basis.

ESF WRISTBANDS

You will be allocated one wristband for each member of your party booked through ESF Events. Please be aware that people without a wristband will not be able to participate in the festival, attend the presentation ceremony or enter evening entertainment venues at the holiday centres.

PHOTOGRAPHS

By registering your team(s), you are also agreeing that ESF Events may, if appropriate, use any photographs taken by the event photographers at ESF 2022 of individual players or teams, in the ESF Festival of Football marketing literature, website and advertising. If you would not like photography of your players or teams to be used for this purpose for any reason, you must notify ESF Events via email prior to the festival taking place.

EVENT ORGANISERS

The ESF Festival of Football is organised and staged by ESF Events Ltd (Company Registration Number 7695303).

Registered Address: ESF Events Ltd, 18A Park Lane, Melton Mowbray, Leics, LE13 0PT

Tel: 01664 566360. Email: info@esfevents.co.uk

ACCOMMODATION

IMPORTANT: Accommodation for your whole party, including players, families, coaches and supporters, must be booked through ESF Events. If members of your party book alternative accommodation, which is not through ESF Events, the team will not be permitted to participate in ESF 2022.

The only exception to this is 'local' teams who are invited to participate in the festival to ensure the best possible format in each age group.

Once the club is registered, for teams attending festivals at Butlin's, ESF Events will email the Group Leader a unique accommodation booking link for your team. Group Leaders can simply forward this email to the parents in your group, who can then book accommodation for their family/friends on the ESF Events section of the Butlin's website, through the unique accommodation booking link. For teams attending the Ayr festivals, the Group Leader will be emailed an accommodation booking form to book units for your whole party. Your party will be given an accommodation booking deadline by ESF Events, which is normally 3 weeks after your Team/Club Registration has been accepted. A deposit of £20 per person is required to book accommodation. The final balance for accommodation will be due no later than 8 weeks before the festival take place.

Accommodation will be allocated on a first-come first-served basis. All sizes and grades of accommodation are subject to availability. If you select a particular size or grade of accommodation which is no longer available, you will be offered the nearest alternative. Accommodation will always be available once your registration has been accepted, providing your party book their accommodation by their accommodation booking deadline, but we cannot guarantee your first choice of accommodation.

UNOCCUPIED BEDS: In cases where a unit of accommodation is booked leaving unoccupied beds, a full subsidy will be charged. For example, if 3 people book a 4 berth unit of accommodation, they would have to pay for 4 people.

Infants under the age of 2 years, who go free if you bring along your own cot, do not count towards the occupancy of a unit. At all Butlin's resorts you can hire a cot for a fee of £10 (linen is not provided) or pay a supplement of £35 if an infant under 2 sleeps in a bed. At Haven Craig Tara you can hire a cot for a fee of £7 (linen is not provided).

For full Terms & Conditions of the holiday centres and full details of accommodation and facilities, please refer to www.butlins.com and www.haven.com and the ESF accommodation booking information, which is emailed to Group Leaders. By registering for ESF 2022 all members of your group accept the T&C's of booking as detailed at www.butlins.com and www.haven.com.

ACCOMMODATION DEPOSITS & FINAL BALANCE

Accommodation deposits at all venues are £20 per person. The final balance will be due no later than 56 days before the festival takes place.

DINING PLANS AT BUTLIN'S RESORTS

Half Board Dining Plans at Butlin's include breakfast and evening meal. Evening meal is included on the day of arrival, but not if you arrive after the restaurant is closed. Breakfast is included on the day of departure. Meal times are scheduled so they don't clash with your festivals fixtures.

CASHBACK AT HAVEN CRAIG TARA, Ayr

Put the following number of people in an accommodation unit and get Cashback from ESF Events at the ESF festival in Ayr.

Number of People in unit	7	8
CASHBACK per unit	£50	£100

FREE PLACES

All teams will qualify for one free place for every 25 paying guests booked in your party, to the value of the cheapest grade of accommodation booked by the members of your party. Free places will be deducted from your final balance or refunded by ESF Events.

ADULT TO CHILD RATIOS

There is a minimum adult to child ratio of 1 to 2 at all Butlin's resorts and 1 to 3 at Haven. At least one responsible adult over the age of 21 must occupy each unit of accommodation.

BROCHURE ACCURACY

To the best of our knowledge, all information in this brochure is accurate at the time of print. Please be aware that there may be occasions when the facilities listed in this brochure are modified or unavailable due to factors beyond our control.

CORONAVIRUS GUARANTEE

If a Butlin's or Haven resort is unable to open for a scheduled ESF festival due to coronavirus, accommodation payments will be refunded to all ESF guests and registration fees will be refunded to all registered teams.

INSURANCE

The 2022 ESF Festival of Football is covered for 'Public Liability' insurance by ESF Events Ltd. However, this does not cover individual teams or 'person to person' public liability, personal accident or injury whilst attending the festival. We strongly recommend that all participating teams, if they are not already covered, take out insurance cover for these risks. We also strongly recommend all members of your party take out appropriate holiday insurance.

CANCELLATION

If you cancel your accommodation booking due to illness, accident or change of circumstances, and if you have taken insurance cover, payments for accommodation arising from the cancellation may be covered. Team/Club Registration Fee payments made to ESF Events will not be refunded for teams who cancel their booking. To cancel your team booking, you must email ESF Events at info@footballfestivals.co.uk to notify us.

If you've taken out Butlin's Holiday Protection and need to cancel your break, you'll need to call Butlin's Customer Care team on 0330 100 6659 (calls charged at standard national rate) as soon as you can. If you have not taken Butlin's Holiday Protection and you cancel your break, Butlin's will not issue a refund and you will need to claim back through your holiday insurance provider.

BUTLIN'S CANCELLATION CHARGES:

If you have Butlin's Holiday Protection and you are cancelling for sickness, redundancy, jury service or bereavement:

- Two days (48 hours) or more – Full refund minus a cancellation charge of £50 per accommodation unit and cost of Butlin's Holiday Protection
- Two days (47 hours, 59 minutes) or less – 30% refund of your total holiday cost and cost of Butlin's Holiday Protection

If you have Butlin's Holiday Protection and you are cancelling for any other reason:

- 56 days or more – Full refund minus a cancellation charge of £50 per accommodation unit and cost of Butlin's Holiday Protection
- 55-43 days – 70% refund minus a cancellation charge of £50 per accommodation unit and cost of Butlin's Holiday Protection
- 42-29 days – 50% refund minus a cancellation charge of £50 per accommodation unit and cost of Butlin's Holiday Protection
- 28-8 days – 10% refund minus a cancellation charge of £50 per accommodation unit and cost of Butlin's Holiday Protection
- 7 days or less – no refund

HAVEN CANCELLATION CHARGES:

- 56 days or more – Full refund minus deposits
- 55-43 days – 60% refund
- 42-29 days – 40% refund
- 28 days or less – 0% refund

BEHAVIOUR & CONDUCT WHILE ON TOUR:

It is a condition of participation in ESF 2022 that you agree to accept the authority and decisions of the ESF festival organisers in attendance at the festival. It is the responsibility of the Group Leader and adults in the party to ensure the behaviour of all members of your party is acceptable at all times at the festival. The ESF Code of Conduct will be forwarded to all Group Leaders prior to the festival. This Code of Conduct must be accepted and adhered to by all members of your party whilst in attendance at the festival. In extreme cases of unacceptable behaviour, the Holiday Centre Management & ESF Events reserve the right to terminate a holiday whereby part or all of a team may be required to leave the premises without refund. Clubs will be charged for any damages caused by members of their party. Misconduct while at the holiday centre, or at the festival itself, may also be reported to the appropriate Area or National Governing Body by ESF Events, for further disciplinary action to be taken as deemed appropriate.

EVENT CANCELLATION/CURTAILMENT

In the unusual event that there are insufficient entries in an age group to go ahead with the event, ESF Events will attempt to offer a suitable alternative for your team. If there is not an alternative option which is acceptable for your group, and you wish to cancel your booking, Team/Club Registration Fee and any accommodation payments made by your group will be refunded in full. Whilst every effort will be made to complete all scheduled fixtures at the festival, ESF Events cannot be held responsible for the curtailment of a festival due to adverse weather conditions or the decision of other teams to withdraw from the festival.

DATA PROTECTION

ESF Events will use the personal information that you provide to process your booking and provide your tour. We may also need to pass your information to third party service providers such as Butlin's and Haven. The Group Leader for each booking has the authority to discuss all accommodation bookings made under the team booking with ESF Events and representatives from the holiday centres if required. It is the Group Leaders responsibility to inform all other members of your party what information you are providing, and what we may use it for.

FORCE MAJEUR

We do not accept liability for any loss, damage or expense arising from a change or cancellation to your tour which occurs due to unusual or unforeseeable circumstances beyond our control and that of our suppliers. Such events would include, for example, war, threat of war, riots, civil strife, pandemics, industrial disputes, terrorist activity, fire or adverse weather conditions, natural or nuclear disaster, decisions of Football Associations or similar events beyond our control.

COMPLAINTS PROCEDURE

In the event that you experience problems with any element of your tour, you must advise the ESF Events festival organisers on resort in writing, so that we can attempt to resolve the problem at once. If the problem cannot be resolved at the festival, we will ask your Group Leader or nominated Coaches to complete a complaint form, following which ESF Events will undertake a full investigation on your return from the festival. If you fail to take either of these steps, it will affect our ability to investigate your complaint and may impact the way your complaint is dealt with. In the event of any dispute arising between us, the dispute will be governed by the laws of England under the exclusive jurisdiction of the English courts. Complaint forms must be submitted in writing within 28 days of the festival.

ESF Events cannot be held responsible for:

- The conduct, behaviour and actions of other teams attending ESF 2022.
- The decision of teams not to fulfil a scheduled fixture at the festival.
- Loss of property and damage to property/vehicles at the holiday centre or festival pitch venue. Vehicles are driven to and parked at festival venues at the owners risk.

FINANCIAL PROTECTION

All payments made to ESF Events Ltd are fully protected. ESF Events are members of ABTOT – The Association of Bonded Travel Organisers Trust.

The Association of Bonded Travel Organisers Trust Limited (ABTOT) provides financial protection under the Package Travel, Package Holidays and Package Tours Regulations 1992 for ESF Events Ltd, and in the event of their insolvency, protection is provided for the following:

1. non-flight packages commencing in and returning to the UK;
 2. non-flight packages commencing and returning to a country other than the UK;
 3. flight inclusive packages that commence outside of the UK, which are sold to customers outside of the UK;
 4. accommodation only bookings;
- 1, 2, 3 and 4 provides for a refund in the event you have not yet travelled. 1 and 3 provides for repatriation. Please note that bookings made outside the UK are only protected by ABTOT when purchased directly with ESF Events Ltd.

Only contracts made with ESF Events Limited as a principal operator of the bookings will be covered by ABTOT. Bookings with, and payments made directly to, Butlin's are not covered by ABTOT.



Search ESF Festival of Football

T 01664 566360 E info@footballfestivals.co.uk W www.footballfestivals.co.uk

VESEY™

THE TEAMWEAR INNOVATORS™



QUALITY CUSTOM TEAMWEAR

www.discountfootballkits.com

*Unique custom kits.
*Nike Park VII Jerseys.
*Dri-FIT fabric technology.
*Applied custom front.
*Integrated number and logo
*Design to doorstep within
4 weeks.
*XS to XXL mens.
*Fully scalable designs.

KIT DESIGNS 99+ OR DESIGN YOUR OWN



VESEY™ iD allows you to bring your club's identity to life with a brand new bespoke shirt. Using the latest technology in teamwear, we wanted to give you the opportunity to showcase your club's unique style, identity and story through your kit.

OWN YOUR IDENTITY, OWN THE PITCH

ESF2022 TEAM REGISTRATION FORM

Complete and return this form via post or email to info@footballfestivals.co.uk to register your team(s). Once accepted, you will receive confirmation of entry and accommodation booking information via email.

Full Name of Club

Name of County/Area FA to which the club is affiliated for 2021/2022 season

County FA Affiliation Number for 2021/2022 season (English teams only) X -

IMPORTANT All English teams wishing to enter ESF 2022 must supply their County FA Affiliation Number (begins with letter X for 2021/2022 season). This can be advised at a later date if you have not received it from your County FA yet. Teams from other countries must obtain written permission from their National Association to attend ESF 2022, which must be emailed to ESF Events at least 6 weeks prior to the festival.

Club Secretary Name Telephone

Email

Group Leader Name & Address Postcode

Email

Telephone (Day) (Mobile)

ESF 2022 Venue Dates

Age Groups

Please indicate the number of squads to be registered in each age group. i.e. to enter 3 squads in the U8, please write 3 x U8

Total number of teams to be registered **5-a-side** £119 per team **7-a-side** £149 per team **9-a-side** £169 per team **11-a-side** £199 per team OR **Club Registration** £399 for unlimited teams

Payment by Bank Transfer ☐ Please send bank transfer payments to the following account and use your club name and age group as the payment reference. Account Name: **ESF Events Ltd** Sort code: **09 01 28** Account Number: **82194892**

Payment by Card ☐ Please tick here to pay by credit/debit card and ESF Events will call you to take your card details. There is no charge for debit cards or credit card payments.

Payment by Cheque ☐ I enclose a cheque for £ made payable to "ESF Events Ltd".

As the Group Leader, I have understood the T&C's listed on this registration form and at www.footballfestivals.co.uk and accept the T&C's for all members of our group. I confirm that the current Club Secretary has given permission for our team(s) to participate in ESF 2022. I understand and accept that ESF Events and Butlin's/Haven may need to contact me via post, email, telephone and text message to process and administer this booking.

Signed Date

ESF Events will treat your personal data with the utmost care. With the exception of providing your details as Group Leader to the Holiday Centre selected, which is a requirement of attendance, ESF Events will not share your personal data with any third party.

NSPCC We're proud to support the NSPCC (Registered Charity Numbers 216401 & SC037717) at ESF 2022. **£5 will be donated to NSPCC for each team that registers for ESF 2022. Over £35,000 has been raised with this scheme in recent years**

Financial Protection ESF Events Ltd are members of ABTOT - The Association of Bonded Travel Organisers Trust. For full details please visit www.footballfestivals.co.uk



ESF Events Ltd, 18A Park Lane, Melton Mowbray, Leicestershire, LE13 OPT
T 01664 566360 E info@footballfestivals.co.uk W www.footballfestivals.co.uk



Search ESF Festival of Football

RHINOS
CHALLENGE



ESF2022
THE UK'S BIGGEST YOUTH FOOTBALL FESTIVAL



TIGERS
CHALLENGE



ESF
EVENTS

With a passion for sport and over 30 years experience organising some of the UK's most prestigious youth sporting events, ESF Events are the leading specialist sports tour operator in the UK.

Since our first event in 1989, over 1.25 Million people have put their trust in ESF and participated in our festivals. Our promise to all youth sports teams is that we will continue to do everything possible to ensure you experience an unforgettable touring experience of the very highest quality.

T 01664 566360 E info@esfevents.co.uk W www.esfevents.co.uk

NSPCC 2018 CHILDHOOD CHAMPIONS AWARDS
CORPORATE PARTNER OF THE YEAR - MIDLANDS

SILVER
Best Business Serving Sport
less than 20 employees

FOOTBALL BUSINESS AWARDS 2018

BRONZE
Best Business Serving Football
up to £2m turnover

discountfootballkits.com
the UK's leading teamwear specialist



**MENS
TEAMWEAR**



**WOMENS
TEAMWEAR**



**KIDS
TEAMWEAR**



**TRAINING
WEAR**

FREE DELIVERY | **ON ALL ORDERS OVER £99**
DELIVERED TO A UK MAINLAND ADDRESS. CANNOT BE USED IN CONJUNCTION WITH ANY OTHER OFFER. OFFER MUST END MIDNIGHT 31ST JULY 2022

USE CODE: **ESF2022**



CLUBWEBSHOP.COM
UNIQUE - SIMPLE - SPECIALIST - SERVICE

JOIN OVER 1000 CLUBS

**YOUR KIT HELD
IN STOCK**

**A UNIFIED,
PROFESSIONAL
IMAGE**



**KIT MANAGER
FACILITY**

**DEDICATED
CUSTOMER
SUPPORT**

“

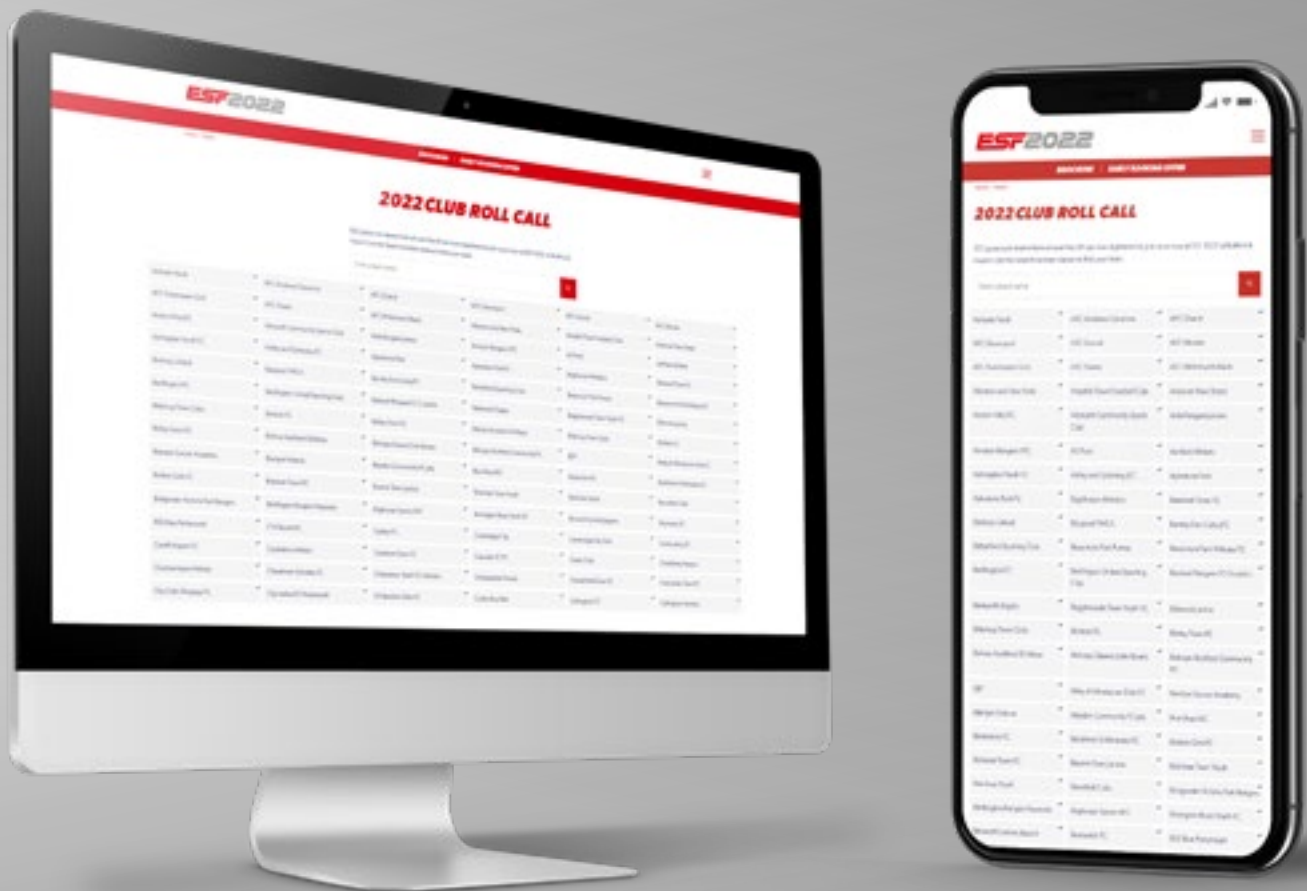
DEALING WITH CLUB WEB SHOP HAS BEEN A MATCH WINNER FOR US.
DAVE OSBORN, COMMERCIAL MANAGER, LONG EATON UNITED FC, DERBYSHIRE FA

”

REGISTER YOUR INTEREST @ CLUBWEBSHOP.COM

1000 GRASSROOTS TEAMS PARTICIPATING!

See who's booked for ESF 2022 at www.footballfestivals.co.uk/teams



ESF Events
18A Park Lane, Melton Mowbray
Leicestershire, LE13 0PT

Tel: 01664 566360
Email: info@footballfestivals.co.uk
Web: www.footballfestivals.co.uk



Search ESF Festival of Football

Designed by  www.thisismagnetic.co.uk